



B A T E C  
BATIMENT TECHNOLOGIE

# PLAFOND AMENAGEMENT CLOISONNEMENT



### Placoplatre BA13 NF



Ref: **PL\_P0130200E** (120/200 EXP)  
**PL\_P0130250E** (120/250 EXP)  
**PL\_P0130300E** (120/300 EXP) | Unité vente  
 Unité  
 Unité  
 Unité

### Plaque placo Hydro



Ref: **PL\_P8500200E** (120/200 P80 EXP)  
**PL\_P8500250E** (120/250 P80 EXP) | Unité vente  
 Unité  
 Unité

### Placo Duo'Tech 19



Ref: **PL\_P25623000** (90/300) | Unité vente  
 Unité

### Plaque Habito 13



Ref: **PL\_P01913000** (120/300) | Unité vente  
 Unité

### Fourrure Stil F 530/530 bot 10L



Ref: **PL\_H85605300** | Unité vente  
 3 Metres

### Corniére Stil CR2 bot 30L



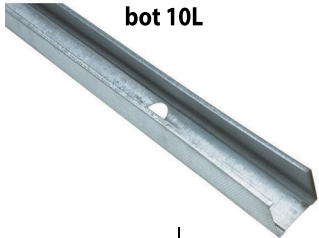
Ref: **PL\_H82603000** | Unité vente  
 3 Metres

### Rail Stil R 48/300 bot 10L



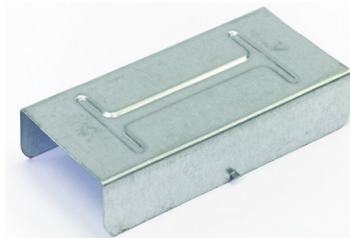
Ref: **PL\_H84003000** | Unité vente  
 3 Metres

### Montant Stil M 48/299 bot 10L



Ref: **PL\_H84302990** | Unité vente  
 3 Metres

### Eclisse Still F 530



Ref: **PL\_H87710000** | Unité vente  
 boîte 50 P

### Laine de Verre



Ref: **PL\_13035** - 45\*900\*2(6500) 2Rlx  
**PL\_69327** - 45\*600\*2(6500) 2Rlx | Unité vente  
 2Rlx  
 2Rlx

### Tige filetee Diam 6MM LG 1M



Ref: **PL\_87540** | Unité vente  
 à l'unité

### Cavalier Still F 530 BTE/100P



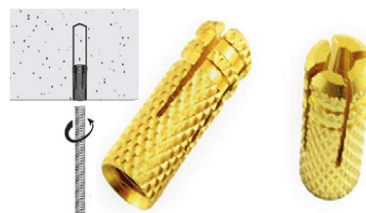
Ref: **PL\_E02140100** | Unité vente  
 100 P

### Bande PP Grand Rouleau BTE 10rlx



Ref: **PL\_E04200010** | Unité vente  
 10 Rlx

### Cheville laiton Diam 6MM



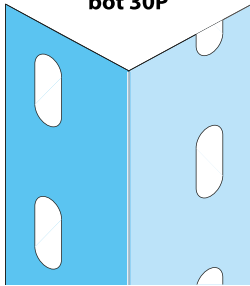
Ref: **PL\_87551** | Unité vente  
 à l'unité

### Mat fixations cheville TAPCO 6mm



Ref: **PL\_XREVFIX** | Unité vente  
 boîte 200P

**Cornière d'Angle Métal  
bot 30P**



Reference **PL\_H91800000** | Unité vente **2,5 Metres**

**Bande Armée 50/bte  
30m / 50 mm**



Reference **PL\_H83410000** | Unité vente **1 Rlx**

**Vis TRPF 13**



Reference **PL\_E69140500** | Unité vente **boite 500 P**

**Vis Habito 41**



Ref: **PL\_H66330800** | Unité vente **boite 800 P**

**Vis TTPC 25**



Ref: **PL\_E60261500** | Unité vente **boite 1500 P**

**Vis TTPC 35**



Ref: **PL\_E60361500** | Unité vente **boite 1500 P**

**Vis Habito 25**



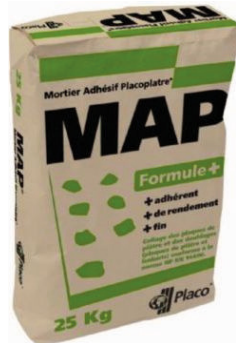
Ref: **PL\_H66310250** | Unité vente **boite 250 P**

**Placojoint SN 25 kg 35s**



Ref: **PL\_A92700035** | Unité vente **sac 25 kg**

**MAP 25kg Formule + 35s**



Ref: **PL\_A88900035** | Unité vente **sac 25 kg**

**Lutèce Finition 25kg 48s**



Ref: **PL\_L40575A4120** | Unité vente **sac 25 kg**

## LES FAUX-PLAFONDS

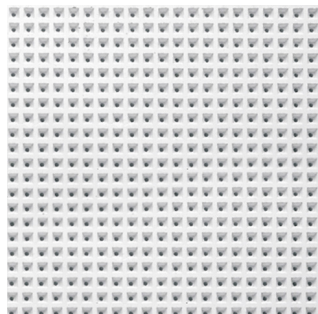
**Apolo  
600x600mm**



Ref: **PL\_DC40000120P / A**  
**PL\_DC50031911P / E-24**  
**PL\_DC60000510P / D**

Unité vente: **Sur Commande**

**Le Caire semi-perforé  
600x600mm**



Ref: **PL\_DC50031210P / E-24**

Unité vente: **Sur Commande**

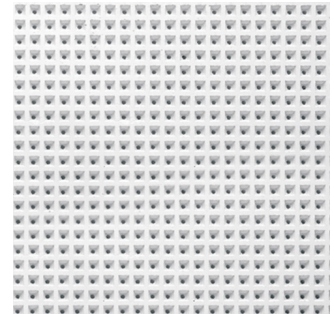
**Capri  
600x600mm**



Ref: **PL\_DC40000320P / A**  
**PL\_DC50031310P / E-24**  
**PL\_DC50030710P / E-15**

Unité vente: **Sur Commande**

**Cairo Fono  
600x600mm**

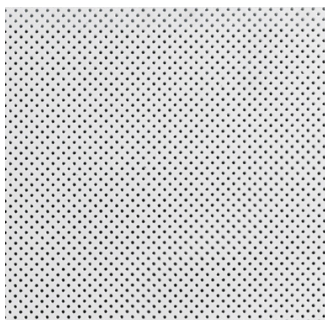


Ref: **PL\_DC50040110P / E-24**  
**PL\_DC50012710P / A**  
**PL\_DC50040610P / E-24**  
**PL\_DC50012610P / E-15**

Unité vente: **Sur Commande**

**A:** bord droit  
**E15 et E24:** bords décaissés  
**D:** bord qui vient cacher l'ossature

**Corail semi-perforé**  
600x600mm



Ref: [PL\\_DC40000710P / A](#)  
[PL\\_DC50040510P / E-24](#)  
[PL\\_DC50011910P / E-15](#)  
[PL\\_DC60000710P / D](#)

Unité vente: [Sur Commande](#)

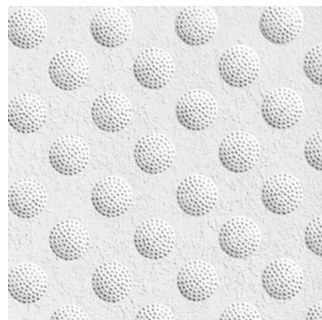
**Fissuré**  
600x600mm



Ref: [PL\\_DC40000420P / A](#)  
[PL\\_DC50031410P / E-24](#)

Unité vente: [Sur Commande](#)

**Golf**  
600x600mm



Ref: [PL\\_DC40001020P / A](#)  
Unité vente: [Sur Commande](#)

**Sol**  
600x600mm



Ref: [PL\\_DC50035710P / E-24](#)  
Unité vente: [Sur Commande](#)



**B A T E C**  
BATIMENT TECHNOLOGIE

Villa Ya Salam, Ngor Almadies, Dakar / Sénégal (derrière Philip Morris)  
Mail: [batecinfo01@gmail.com](mailto:batecinfo01@gmail.com) Tel: +221 33 820 65 36  
[www.batecsenegal.com](http://www.batecsenegal.com)